

T 10 N

R 4 W



Office of the Monroe County Surveyor
Trohn Enright-Randolph

Health Services Building
119 West 7th Street
Bloomington, IN 47404
Phone: (812) 349-2570

Dear User,

The following images were obtained in 2017 by the Office of the Monroe County Surveyor from the State Imaging and Microfilm Laboratory at the Indiana State Archives. The field notes and plats for Owen County are stored on microfilm Reel 4659 at the Indiana State Archives. Each page provided by the State Imaging and Microfilm Laboratory is approximately 18MB. Our office combined the pages by Township & Range and reduced the resulting pdfs. This process may have caused some degradation in quality. We will provide unreduced images of specific pages if required. Please contact us at 812-349-2570 or at SurveyorsOffice@co.monroe.in.us to request a higher quality image of any specific page.

The pdfs are bookmarked with the original page numbers as assigned by the State Imaging and Microfilm Laboratory.

Be prepared to provide the county name, reel number, and the required page numbers when requesting full sized images.

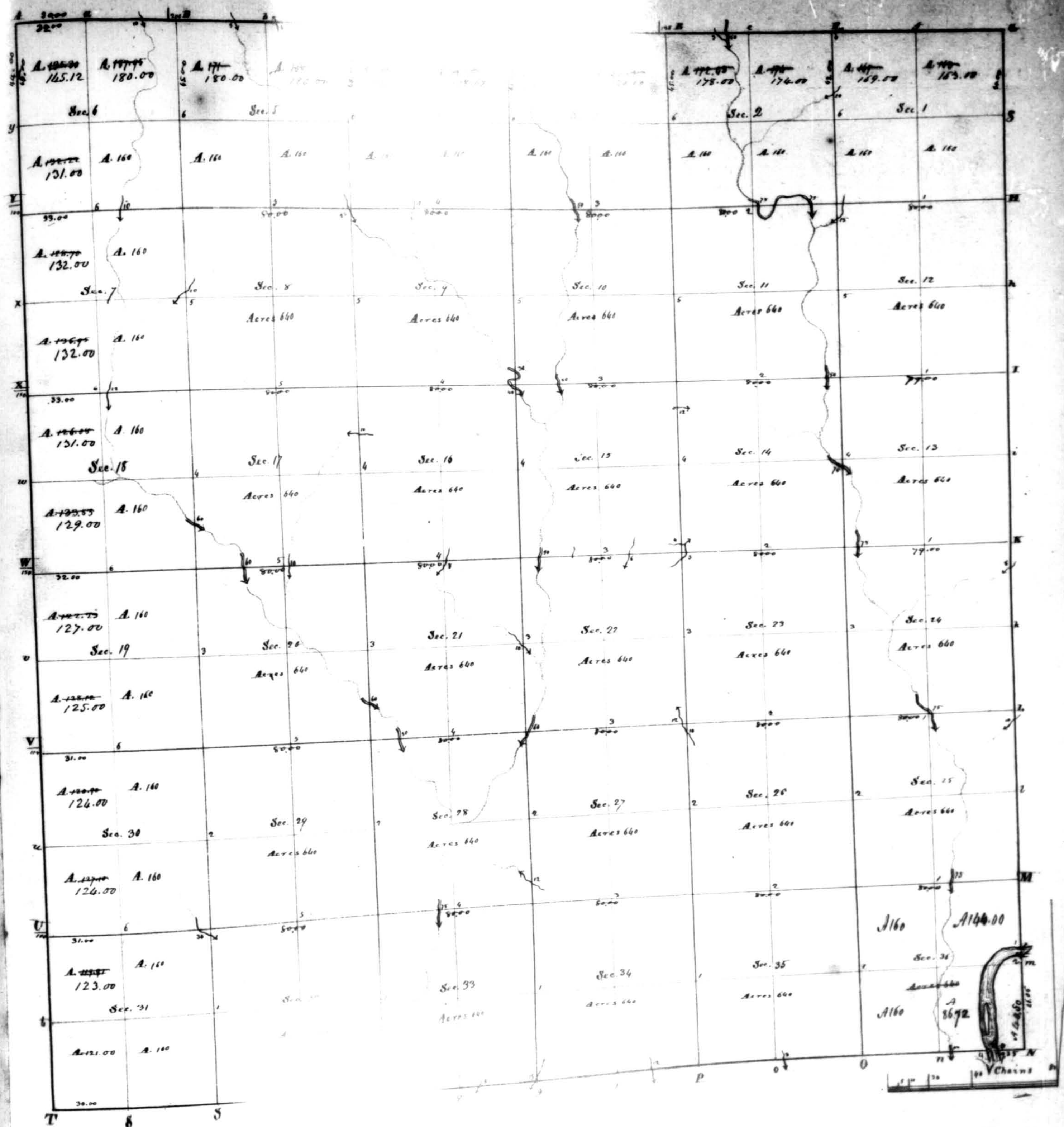
If you would like a DVD of an entire county, please provide us with one DVD per county along with a self-addressed, stamped envelope.

Trohn Enright-Randolph
Monroe County Surveyor

<i>Section corners described</i>	<i>Quarter-Section corners continued</i>

Spawning trees	Sucha diam	Long & c they bear	Sucha dist.	From H to	Bearing tree	Sucha diam	Long & c they bear	Sucha dist.
H. Oak	21	North	20	I to X at 1.	Beech	15	52	18
W. Oak	8	5	8		W. Oak	15	37	18
W. Oak	13	5	14	2.	W. Oak	24	North	20
W. Oak	30	5	22		Beech	18	5	33
W. Oak	30	5	26	3.	Sugar	20	5	32
W. Oak	30	5	25		W. Oak	20	5	30
W. Oak	30	5	25	4.	Sugar	9	5	70
W. Oak	30	5	25		do	7	5	50
W. Oak	30	5	25	5.	Sugar	18	5	47
W. Oak	30	5	25		do	24	5	30
W. Oak	30	5	25	6.	do	20	5	30
W. Oak	30	5	25		W. Oak	12	5	38
W. Oak	30	5	25	H to X at 1.	do	13	5	38
W. Oak	30	5	25		Beech	13	5	63
W. Oak	30	5	25	2.	Sugar	13	5	63
W. Oak	30	5	25		do	13	5	63
W. Oak	30	5	25	3.	Sugar	13	5	63
W. Oak	30	5	25		do	13	5	63
W. Oak	30	5	25	4.	Maple	13	5	63
W. Oak	30	5	25		Beech	13	5	63
W. Oak	30	5	25	5.	do	30	5	70
W. Oak	30	5	25		W. Oak	12	5	31
W. Oak	30	5	25	6.	Sugar	13	5	38
W. Oak	30	5	25		W. Oak	13	5	38
W. Oak	30	5	25	O to F at 1.	Beech	30	5	30
W. Oak	30	5	25		do	18	5	30
W. Oak	30	5	25	2.	W. Oak	18	5	30
W. Oak	30	5	25		do	18	5	30
W. Oak	30	5	25	3.	Sugar	18	5	30
W. Oak	30	5	25		do	18	5	30
W. Oak	30	5	25	4.	W. Oak	18	5	30
W. Oak	30	5	25		W. Oak	18	5	30
W. Oak	30	5	25	5.	Sugar	18	5	30
W. Oak	30	5	25		W. Oak	18	5	30
W. Oak	30	5	25	6.	Sugar	18	5	30
W. Oak	30	5	25		W. Oak	18	5	30
W. Oak	30	5	25	P to Q at 1.	Sugar	20	5	30
W. Oak	30	5	25		do	20	5	30
W. Oak	30	5	25	2.	Beech	12	5	38
W. Oak	30	5	25		do	12	5	38
W. Oak	30	5	25	3.	W. Oak	12	5	38
W. Oak	30	5	25		W. Oak	12	5	38
W. Oak	30	5	25	4.	Sugar	12	5	38
W. Oak	30	5	25		W. Oak	12	5	38
W. Oak	30	5	25	5.	Sugar	12	5	38
W. Oak	30	5	25		W. Oak	12	5	38
W. Oak	30	5	25	6.	Sugar	12	5	38
W. Oak	30	5	25		W. Oak	12	5	38
W. Oak	30	5	25	Q to D at 1.	Sugar	33	5	40
W. Oak	30	5	25		W. Oak	33	5	40
W. Oak	30	5	25	2.	Beech	14	5	70
W. Oak	30	5	25		do	14	5	70
W. Oak	30	5	25	3.	Beech	8	5	40
W. Oak	30	5	25		do	8	5	40

Section Corners described.	Course	Dist.	East	North
1	S. 20° E.	12	11.8	4.1
2	do	16	15.6	5.3
3	N. 70° E.	34	25.6	31.9

[illegible]

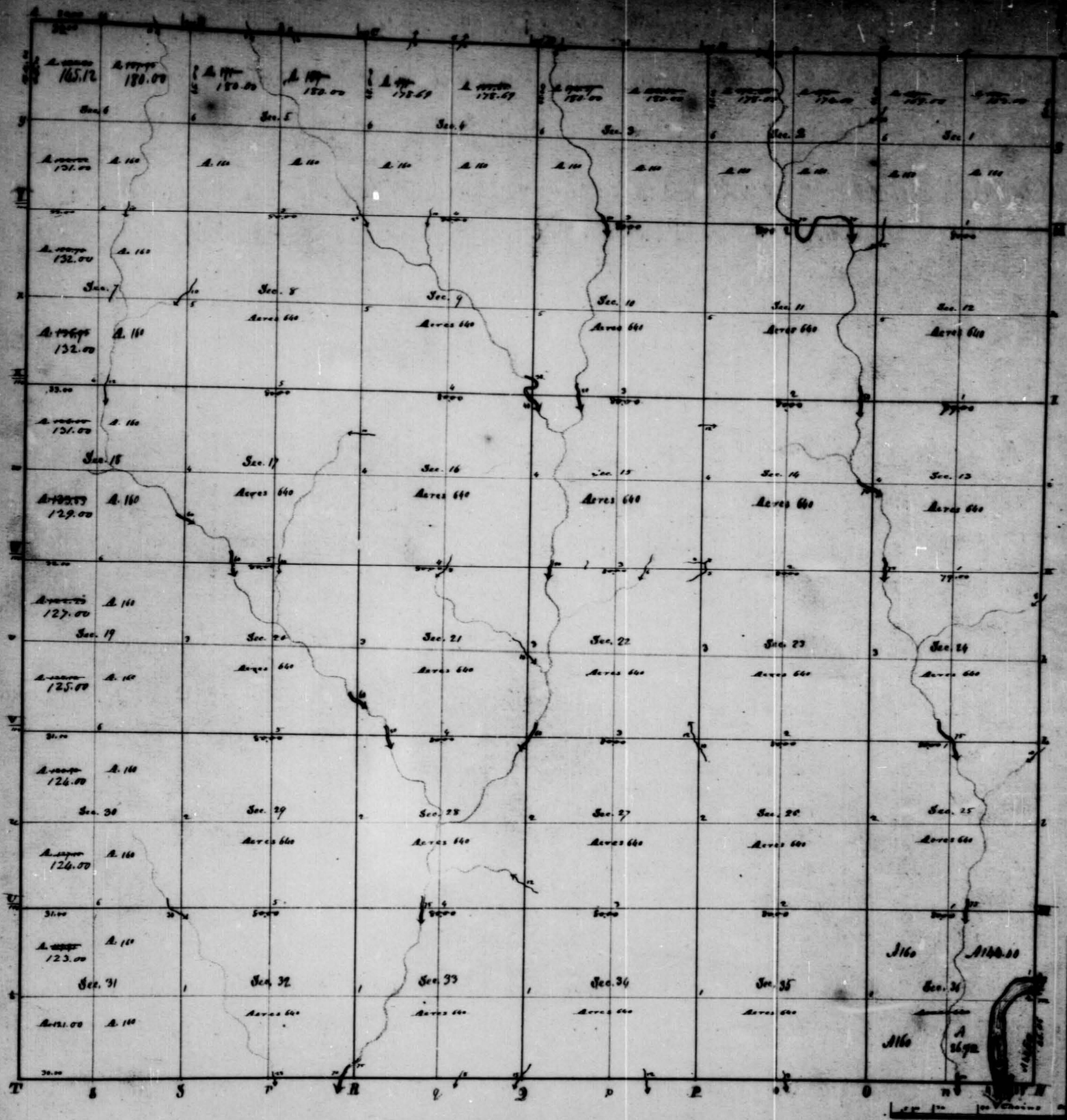
Surveyed by James Holmes 181

		Description
20	1	Trunkly Gr.
25	6	Muddling Land - Timber Birch
25	10	ditto
25	26	Poor Mts. Stony Land
25	28	Mtly Stony Land - Timber Oak, Sugar
25	25	Mtly Land - Timber Oak, Birch
25	10	Poor Mtly Land - Timber Birch
25	20	Mtly Land - Timber Oak & Birch
25	13	Poor Mtly Land - Timber Oak, Birch
25	12	Mtly Land - Timber Oak, Birch, Sugar
25	1	ditto - Timber Oak, Birch, Sugar
25	1	ditto
25	35	ditto
25	35	Muddling good Land - Timber Oak, Sugar
25	35	ditto
25	35	Mtly Land - Timber Oak, Birch, Sugar
25	35	Poor Mtly - Timber Oak, Birch
25	35	ditto
25	15	ditto
25	15	Poor broken Land - Timber Birch, Mt Oak
25	15	Mtly Land - Timber Birch, Sugar

1873	Broken land - Timber Buckle. Sugar
1, 38	ditto
29, 32	ditto
29, 33	1stly land - Timber Oak Buckle. Sugar
29, 30	ditto
29, 29	1stly land - Timber Buckle Oak & Hickory
10, 30	ditto
16, 20	Land of middling quality. Timber Buckle. Sugar & other
14, 20	ditto
18, 19	Middling land - Timber Same
17, 18	Rich 1stly land. Timber Sugar
8, 17	ditto
7, 25	Middling good land. Buckle. Sugar. Oak
7, 8	Second rate land. Timber Same
5, 8	ditto
5, 7	Timber Buckle. Sugar & other
5, 6	Middling land. Timber & other

tree	backs	longer	lines
down	they	down	lines
15	52	18	
15	37	25	
24	18	10	
18	53	33	
15	12	14	
30	30	17	
7	70	22	
9	80	16	
15	45	18	
18	47	12	
24	50	30	
20	7	17	
15	38	10	
15	63	20	
12	50	28	
15	30	15	
18	101	26	
18	35	26	
10	79	11	
30	70	35	
12	41	31	
15	30	17	
19	58	28	
30	30	25	
9	50	15	
18	50	10	
18	50	10	
18	72	10	
18	67	10	
12	South	10	
14	75	13	
15	38	13	
24	South	13	
19	75	18	
20	45	22	
12	3	16	
15	58	18	
7	19	20	
7	75	20	
8	20	20	
8	80	23	
20	37	25	
24	27	15	
15	33	30	
26	20	16	
4	15	35	
3	40	30	
33	75	16	
4	45	23	
8	40	25	
4	38	8	
20	53	10	
5	33	10	
19	East	10	
16	33	10	
24	25	10	
8	20	10	
3	45	10	
4	27	16	
5	45	12	
5	10	20	
12	80	12	
15	75	13	
18	20	31	
32	30	34	
15	85	14	
9	East	25	
32	55	26	
14	85	10	
15	20	10	
12	75	10	
20	10	10	
4	30	10	
20	30	10	
24	15	10	
5	10	10	
20	South	10	
24	30	10	

wood	12	N 5 E	9
u.	12	S 64 W	18
u.	5	N 34 E	16
	8	S 25 E	17
wood	14	N 56 W	15
	7	S 82 E	24
	8	Corner	
u.	36	N 19 W	25
u.	02	S 19 E	14



Township N^o X North, Range N^o IV West of 2nd M.

Surgeon by James Holmes 1816

Description of the Soil on the interior Sectional lines.

Section	Quality &c.	Section	Quality &c.	Section	Quality &c.	Section	Quality &c.
36	Muddling land - Timber Oak, Sugar, Oak	28.3	Hilly land - Timber Oak, Poplar, Sugar	18.5	Broken land - Timber Oak, Sugar	36	Broken land - Timber Oak, Sugar
36	ditto	30.36	ditto	31.38	ditto	36	ditto
2.6	Poor Hilly Stoney land	27.38	Hilly land - Timber Oak & Sugar	29.33	ditto	36	ditto
2.6	Hilly Stoney land - Timber Oak, Sugar	27.28	Hilly Stoney land - Timber Oak	30.31	Hilly land - Timber Oak, Oak, Sugar &c	36	ditto
2.5	Hilly land - Timber Oak, Oak	20.27	ditto	29.30	ditto	36	ditto
10	Poor Hilly land - Timber Oak, Same	21.22	Very rich land - Timber Sugar, Oak, Oak, Poplar	20.29	Hilly land - Timber Oak, Oak, Oak, Oak	36	ditto
2.6	Hilly land - Timber Oak, Oak, Oak	15.22	Broken Stoney land - Timber H. Oak, Oak	19.30	ditto	36	ditto
10	Poor Hilly land - Timber Oak, Oak	15.16	Poor broken land - Timber Oak, H. Oak, Oak	18.20	Land of muddling quality - Timber Oak, Sugar, Oak	36	ditto
12	Hilly land - Timber Oak, Oak, Oak	10.15	ditto	17.20	ditto	36	ditto
12	ditto - Timber Oak, Oak, Sugar	2.10	Hilly land - Timber Oak & Oak	16.19	broken land - Timber Oak	36	ditto
12	ditto	2.10	ditto	17.18	rich stoney land - Timber Sugar	36	ditto
35	ditto	3.1	Hilly land - Timber Oak, Oak, Sugar &c	5.17	ditto	36	ditto
35	Muddling good land - Timber Oak & Sugar	32.35	Hilly rich land - Timber Sugar, Oak	7.18	broken land - Timber Oak, Sugar, Oak	36	ditto
36	ditto	28.33	rich Hilly land	7.1	Small broken land - Timber Oak	36	ditto
36	Hilly land - Timber Oak, Oak, Sugar, Oak	28.29	Hilly rich land - Timber Oak, Sugar &c	5.8	ditto	36	ditto
36	ditto Hilly - Timber Oak, Oak	21.28	Land, Hilly & Stoney - Timber Oak	6.7	ditto	36	ditto
36	ditto	20.21	Hilly land	5.6	broken land - Timber Oak	36	ditto
36	ditto	16.21	ditto	36	ditto	36	ditto
36	Poor broken land - Timber Oak, H. Oak	16.17	ditto	36	ditto	36	ditto
36	Hilly land - Timber Oak, Sugar	9.16	Broken land - Timber Oak, Sugar, Oak	36	ditto	36	ditto
36	ditto	5.9	ditto	36	ditto	36	ditto

INDEX MAPS.
T. 8 N. R. 5 W. 2nd Mer.

	463		463		463		463		462		462	
465	6	484	5	480	4	476	3	473	2	469	1	462
	484		484		480		476		472		469	
465	7	484	8	479	9	476	10	472	11	468	12	462
	483		483		479		475		471		468	
464	18	482	17	479	16	475	15	471	14	467	13	461
	482		482		478		475		471		467	
464	19	482	20	478	21	474	22	470	23	467	24	461
	488		481		478		474		470		466	
464	30	481	29	477	28	474	27	470	26	466	25	460
	481		481		477		473		470		466	
460	31	481	32	477	33	473	34	469	35	465	36	460
	460		460		460		459		459		459	

T. R. Mer.

6	5	4	3	2	1
7	8	9	10	11	12
18	17	16	15	14	13
19	20	21	22	23	24
30	29	28	27	26	25
31	32	33	34	35	36

The figures on the lines refer to the page.

Meandering 483

Township No 10 North of Range No 11 West 2nd Mer. Ind.

Ch. 11.

South Boundary

East On a Kanam line between T^s 9 & 10 N. R. 4 W.
5 miles 1/2 ch. Full 5 ch. North of the post. Corners
West On the South Boundary of Sw. 36 T. 11 N. R. 4 W.
10.00 To the Left Bank of W. River 500 links wide, corner
39.00 At Brook 30 links wide, corner
40.00 Set a 1/4 sec post from whikey
Beck 24 in dist. bears S 34 E 7 links dist. 8 a
Sugar 18 " " " N 44 W 25 " "
80.00 Set a post for the cor of Sw. 35 T 36 from whikey
Beck 13 in dist. bears N 59 E 12 links dist. 8 a
Ho 9 " " " S 75 W 27 " "
Sunde rich River bottom.

West On the South Boundary of Sw. 35 T 10 N. R. 4 W.
37.50 At Brook 8 links wide, corner S.E.
40.00 Set a 1/4 sec post from whikey
Poplar 20 in dist. bears N 83 E 2 links dist. 8 a
Beck 18 " " " S 61 W 34 " "
80.00 Set a post for the cor of Sw. 34 T 35 from whikey
W Oak 12 in dist. bears S 7 E 36 links dist. 8 a
Sugar 13 " " " N 45 W 43 " "
Poor hilly Beck land.

West On the South Boundary of Sw. 34 T 10 N. R. 4 W.
21.50 At Brook 12 links wide, corner
41.00 Set a 1/4 sec post from whikey
Beck 12 in dist. bears S 78 E 31 links dist. 8 a
Poplar 20 " " " N 5 W 3 " "
80.00 Set a post for the cor of Sw. 33 T 34 from whikey
Beck 12 in dist. bears N 72 W 24 links dist. 8 a
Ho 9 " " " East 21 " "
Poor Beck land.

T. N. 10 N. R. 4 W. 2nd Mer Ind.

West On the South Boundary of Sec 33. T. 10 N. R. 4 W.
2.00 A Brook 15 links mid, corner S.W.

28.00 " No. 8 " " " "

40.00 Set a 1/4 sec post from whirling
Buck 12 in dia. bears S 55 E. 18 links dist, & a
Sugar 10 " " " N 27 W 15 " "

80.00 Set a post for the cor of Sec 32 & 33 from whirling
Sugar 8 in dia. bears N 52 W 24 links dist, & a
Oak 30 " " " S 51 E. 42 " "
Meadow Buck land.

West On the South Boundary of Sec 32 T. 10 N. R. 4 W.
5.00 A Creek 50 links mid, corner S.W.

39.00 " Brook 25 " " " S.W.

40.00 Set a 1/4 sec post from whirling
Butternut 16 in dia. bears S 20 W 50 links dist, & a
Cherry 5 " " " N 74 E. 21 " "

80.00 Set a post for the cor of Sec 31 & 32 from whirling
Hick 10 in dia. bears N 84 E. 5 links dist, & a
Buck 13 " " " S 56 W. 44 " "
Sand 1 1/2 mile from bottom; 2nd 7 mile Buck land.

West On the South Boundary of Sec 31 T. 10 N. R. 4 W.
40.00 Set a 1/4 sec post from whirling
Logwood 4 in dia. bears N 78 E. 7 links dist, & a
Juniper 3 " " " N 83 W 10 " "

70.00 Intersect the N. 5 W. range line 250 links South of
the Twp. 1 post. Set a post for the cor of T. 9 N. R. 4 W.
AR? 4 1/2 W from whirling
Buck 4 in dia. bears S 86 E. 22 links dist, & a
Oak 3 " " " N 86 W 24 " "
Poor Buck land.

T. N. 10 N. R. 4 W. 2nd Mer Ind.

East Boundary.

April 29 1812. From the cor of T. 9 N. R. 4 W.
3 1/4 W. Run

North On the East Boundary of Sec 36 T. 10 N. R. 4 W.

20.00 A Sycamore 100 in dia.

40.00 Set a 1/4 sec post from whirling
Sycamore 48 in dia. bears N 44 E. 12 links dist, & a
Hackberry 3 " " " S 50 W 21 " "

44.00 To the Left Bank of White River. corner S.W.

80.00 Set a post for the cor of Sec 25 & 36 from whirling
Buck 10 in dia. bears S 24 E. 21 links dist, & a
Sugar 20 " " " N 39 W 23 " "
Sugar mt. River bottom; Timber Hackberry &

North On the East Boundary of Sec 25 T. 10 N. R. 4 W.

14.00 A Buck 18 in dia.

40.00 Set a 1/4 sec post from whirling
Sugar 13 in dia. bears S 4 E. 25 links dist, & a
Buck 13 " " " N 33 W 26 " "

75.50 A Brook 10 links mid, corner S.W.

80.00 Set a post for the cor of Sec 24 & 35 from whirling
Buck 16 in dia. bears S 27 E. 33 links dist, & a
Dogwood 4 " " " N 11 W 25 " "
Pretty good land.

North On the East Boundary of Sec 24 T. 10 N. R. 4 W.

40.00 Set a 1/4 sec post from whirling

Buck 14 in dia. bears S 43 W. 19 links dist, & a
Oak " " " N 52 E. 17 " "

45.25 A Oak 17 in dia.

67.00 A Brook 8 links mid, corner S.W.

80.00 Set a post for the cor of Sec 13 & 24 from whirling
Sugar 14 in dia. bears N 42 E. 11 links dist, & a

T. N. 10 N. R. 4 W. Ind. Mer. Ind.

West On the South Boundary of Sec 33. T. 10 N. R. 4 W.
 2.00 A Brook 15 links wide, corner S.W.
 28.00 " " 8 " " " " "
 40.00 Set a post from which
 Buck 12 in dia. bears S 55 E. 18 links dist. 8th
 Sugar 10 " " " N 27 W 15 " "
 80.00 Set a post for the cor of Sec 32 & 33 from which
 Sugar 8 in dia. bears N 52 W 24 links dist. 8th
 Oak 30 " " " S 51 E. 42 " "
 Meeting Buck land.

West On the South Boundary of Sec 32 T. 10 N. R. 4 W.
 5.00 A Creek 50 links wide, corner S.W.
 39.00 " Brook 25 " " " S.W.
 40.00 Set a post from which
 Butternut 16 in dia. bears S 20 W 5th dist. 8th
 Cherry 5 " " " N 74 E. 21 " "
 80.00 Set a post for the cor of Sec 31 & 32 from which
 Hickory 10 in dia. bears N 84 E. 5 links dist. 8th
 Buck 13 " " " S 56 W. 44 " "
 Sand 1st 1/2 mile from bottom; 2nd 1/2 mile Buck land.

West On the South Boundary of Sec 31 T. 10 N. R. 4 W.
 40.00 Set a post from which
 Dogwood 4 in dia. bears N 78 E. 7 links dist. 8th
 Ironwood 3 " " " N 83 W 10 " "
 70.00 Intersect the N 5 W range line 237 links South of
 the Temp. post. Set a post for the cor of T. 9 N. R.
 N. R. 4 W from which
 Buck 4 in dia. bears S 86 E. 22 links dist. 8th
 Oak 3 " " " N 86 W 24 " "
 Poor Buck land.

T. N. 10 N. R. 4 W. Ind. Mer. Ind.

East Boundary.

April 29, 1812. From the cor of T. 9 N. R. 3
 314 W. Run
 North On the East Boundary of Sec 36 T. 10 N. R. 4 W.
 20.00 A Sycamore 100 in dia.
 40.00 Set a post from which
 Sycamore 48 in dia. bears N 44 E. 12 links dist. 8th
 Hackberry 3 " " " S 50 W 21 " "
 44.00 To the Left Bank of White River. Corner S.W.
 80.00 Set a post for the cor of Sec 25 & 36 from which
 Buck 10 in dia. bears S 24 E. 21 links dist. 8th
 Sugar 20 " " " N 39 W 23 " "
 Same mt. River bottom; Timber Hackberry 8

North On the East Boundary of Sec 25 T. 10 N. R. 4 W.
 14.00 A Buck 18 in dia.
 40.00 Set a post from which
 Sugar 13 in dia. bears N 4 E. 25 links dist. 8th
 Buck 13 " " " N 33 W 26 " "
 75.50 A Brook 10 links wide, corner S.W.
 80.00 Set a post for the cor of Sec 24 & 35 from which
 Buck 16 in dia. bears S 27 E. 23 links dist. 8th
 Dogwood 4 " " " N 11 W 25 " "
 Pretty good land.

North On the East Boundary of Sec 24 T. 10 N. R. 4 W.
 40.00 Set a post from which
 Buck 14 in dia. bears N 43 W. 19 links dist. 8th
 Do. " " " N 52 E. 17 " "
 45.25 A Oak 17 in dia.
 67.00 A Brook 8 links wide, corner S.W.
 80.00 Set a post for the cor of Sec 23 & 24 from which
 Sugar 14 in dia. bears N 42 E. 11 links dist. 8th

T. N. 10 N. R. N. 4 W. 2nd Mer. Ind.

Kick 15 in dia. trees 164 W. 39 links dist;
Sand & p. hilly. Buck, land; 2nd p. mile
Hilly rich land. Timber Sugar Poplar.

North On the East Boundary of Sec 13. T. 10 N. R. 4 W.
40.00 Set a 1/4 sec post from whitch;
Buck 10 in dia. trees 127 W. 16 links dist; 8 a
Sugar 10 " " " A 42 E. 31 "
71.50 A W Oak 60 in dia. in the line.
80.00 Set a post for the cor of Sec 12 & 13 from whitch;
Sugar 16 in dia. trees 122 W. 17 links dist; 8 a
10 " " " A 73 E. 30 "
Hilly rich land; Timber Sugar Buck. &c.

North On the East Boundary of Sec. 12 T. 10 N. R. 4 W.
24.50 A Buck 14 in dia.
40.00 Set a 1/4 sec post from whitch;
W Oak 20 in dia. trees 113 E. 25 links dist; 8 a
Buck 18 " " " A 15 E. 12 "
80.00 Set a post for the cor. of Sec 11 & 12 from whitch;
Buck 16 in dia. trees 110 W. 30 links dist; 8 a
Sugar 9 " " " A 30 E. 26 "
Sand hilly. Timber Buck, Sugar, &c.

North On the East Boundary of Sec. 1. T. 10 N. R. 4 W.
11.00 A Poplar 30 in dia.
40.00 Set a 1/4 sec post from whitch;
Sugar 10 in dia. trees 172 E. 19 links dist; 8 a
10 " " " West 30 " "
80.00 Set a post for the cor of Sec 1. 6. 31 & 36. T. 10 N.
R. 3 & 4 W from whitch;
W Oak 30 in dia. trees 142 E. 34 links dist; 8 a
Buck 18 " " " A 77 W. 38 " "

T. N. 10 N. R. N. 4 W. 2nd Mer. Ind.

Pretty good land; Timber Buck, Sugar, &c.

Surveyed by
James Holmes, D.S.

North Boundary.

May. 2nd 1811. From the cor of T. 10 N. R. 4 W.
East On a Random line On the South Boundary of Sec. 31.
T. 11 N. R. 4 W.
30.00 Set a temp. 1/4 sec post.
55.00 A Brook 10 links wide, Corner S.E.
70.00 Set a temp. 1/4 post for the cor. of Sec 31 & 32.
Land on this line is generally hilly, such Timber
Sugar, Buck, Ash, Oak, Hick &c.

East On a Random line between Sec 31 & 32.
" " " " On the South Boundary of Sec. 32.
T. 11 N. R. 4 W.
27.00 A Brook 5 links wide, Corner S.E.
40.00 Set a temp. 1/4 sec post.
43.00 A Brook 6 links wide, Corner S.W.
80.00 Set a temp. 1/4 post for the cor of Sec 32 & 33.
Land the same.

East On a Random line On the South Boundary of Sec. 33.
T. 11 N. R. 4 W.
23.00 A Brook 3 links wide, Corner N.E.
40.00 Set a temp. 1/4 sec post.
43.00 A Brook 3 links wide, Corner N.
80.00 Set a temp. 1/4 post for the cor of Sec 33 & 34.
Land & timber same.

East On a Random line between Sec 4 & 34.
" " " " On the South B. of Sec. 34.

T. N. 10 N. R. N. 4 W. 2nd Mer. Ind.

- 7.50 At Brook 30 miles mid, corner A
 10.00 " 20. 30 " " " "
 40.00 Set a 74 sup post from which
 80.00 Set a temp post for the cor of Sec 34 & 35.
 Land & timber same.

East On all random line On the South 1/3 of Sec. 35
 T. 11. N. R. 4 W.

- 10.00 At Brook 5 miles mid, corner E. C.
 25.00 " 20. 5 " " " "
 40.00 Set a 74 sup temp post
 80.00 Set a temp post for the cor of Sec 35 & 36
 Healthy rich land. Timber Buck, Sugar & Oak

East On the South 1/3 of Sec. 36. On all random line
 T. 11. N. R. 4 W.

- 2.00 At Brook 10 miles mid, corner E. W.
 40.00 Set a temp 74 sup post
 80.00 Intersect the N. 1/2 Range line 6 ch. South of the Sec
 cor. Healthy rich land. Timber Sugar Buck, Oak.

Corrected and marked the line West.

West On the Line line On the South 1/3 of Sec. 36.
 T. 11. N. R. 4 W.

- 40.00 Set the temp 74 sup post at the ar dist on the true line
 from which, Buck 16 in dist. bears N 55 E. 15 lbs dist
 and as 20. 16 " " " N 10 W. 24 " "
 80.00 Set the temp post on the true line for the cor of Sec 35 & 36
 from which, Buck 16 in dist. bears N 61 E. 14 lbs dist
 and as West. 16 " " " N 55 W. 24 " "

West On the Line line On the South Boundary of Sec. 35
 T. 11. N. R. 4 W.

T. N. 10 N. R. N. 4 W. 2nd Mer. Ind.

- 40.00 Set the temp 74 sup post on the true line from which
 Sugar 10 in dist. bears N 85 W. 50 lbs dist. & as
 80.00 Set the temp post for the true line for the cor of Sec.
 34 & 35 from which,
 Sugar 12 in dist. bears N 88 E. 20 lbs dist. & as
 Buck 16 " " " N 72 W. 19 " "

West On the Line line On the South Boundary of Sec. 34
 T. 11. N. R. 4 W.

- 40.00 Set the temp 74 sup post for the true line from which
 in Dogwood 5 in dist. bears N 80 W. 8 lbs dist. & as
 Buck 5 " " " S 3 E. 15 " "
 80.00 Set the temp post on the true line for the cor of Sec.
 33 & 34 from which,
 Buck 18 in dist. bears S 70 W. 8 lbs dist. & as
 20. 16 " " " S 56 E. 24 " "

West On the Line line On the South 1/3 of Sec. 33.
 T. 11. N. R. 4 W.

- 40.00 Set a 74 sup post on the true line from which,
 Maple 16 in dist. bears S 56 E. 25 lbs dist. & as
 Sugar 18 " " " N 56 W. 25 " "
 80.00 Set the temp post on the true line for the cor of Sec
 32 & 33 from which,
 Dogwood 6 in dist. bears N 66 W. 20 lbs dist. & as
 Ash 16 " " " N 52 E. 38 " "

West On the Line line On the South Boundary of Sec. 32
 T. 11. N. R. 4 W.

- 40.00 Set a temp post on the true line for the cor of Sec
 from which, Sugar 18 in dist. bears S 75 E. 7 lbs dist.
 and as West. 24 " " " N 75 W. 12. " "
 80.00 Set a post on the true line for the cor of Sec. 31 & 32

T. N. 10 N.R. N. 4 W 2nd Mer. Ind.

from which, Buck 8 in dia. bears N 85 E. 27 the dist
and a Hickory 18 " " N 33 W 11 " "

West On the Iowa line between South Boundary of Sec. 31.
40,00 Set the temporary post at the true line from which.
Logwood 6 in dia. bears S 42 E 7 the dist, & a
Buck 12 " " N 56 W 31 " "
70,00 Set the cor of T. 10 N. 11 N. 4 W.

Surveyed by
Alexander Holmes, L.S.

West Boundary

From the cor of T. 9 N. 11 N. 4 W. Run

North On the East Boundary of Sec. 36 T. 10 N. 5 W.
28.50 A Brook 8 mts wide, corner S.E.

40,00 Set a 7/4 post from which,
Logwood 4 in dia. bears S 60 E 14 mts dist, & a
Poplar 5 " " N 85 W 11 " "

80,00 Set a post for the cor of Sec. 25 T. 10 N. 5 W. from which,
Buck 16 in dia. bears N 80 W 34 mts dist, & a
Lc. 12 " " East 25 " "
Poor hilly Oak land.

North On the East Boundary of Sec. 25 T. 10 N. 5 W.
22.50 A Brook 8 mts wide, corner S.E.

40,00 Set a 7/4 post from which,
Buck 12 in dia. bears N 11 W. 4 mts dist, & a
Sugar 14 " " S 55 E 13 " "

59.50 A Brook 15 mts wide, corner S.E.

76.00 A Brook 20 " " " "
80,00 Set a post for the cor of Sec. 24 T. 10 N. 5 W. from which,
Buck 12 in dia. bears S 59 W. 9 mts dist, & a
Sugar 4 " " N 35 E 20 " "

T. N. 10 N.R. N. 4 W 2nd Mer. Ind.

North On the East Boundary of Sec. 24 T. 10 N. 5 W.

20,00 A Sugar 14 in dia.

40,00 Set a 7/4 post from which,
Sugar 14 in dia. bears S 26 W. 18 mts dist, & a
Logwood 4 " " East 14 " "

45.00 A Brook 8 mts wide, corner S.E.

80,00 Set a post for the cor of Sec. 13 T. 10 N. 5 W. from which,
Buck 18 in dia. bears S 39 E. 25 mts dist, & a
Logwood 3 " " N 85 W 13 " "
Poor hilly Buck land.

North On the East Boundary of Sec. 13 T. 10 N. 5 W.

17.50 A Brook 10 mts wide, corner S.E.

34.00 " Lc. 25 " " S.E.

35.50 A Sugar 18 in dia.

40,00 Set a 7/4 post from which,
Buck 18 in dia. bears S 38 W. 5 mts dist, & a
Lc. 4 " " S 52 E 22 " "

80,00 Set a post for the cor of Sec. 12 T. 10 N. 5 W. from which,
Buck 14 in dia. bears N 44 W. 14 mts dist, & a
Lc. 6 " " N 40 E 20 " "
Poor hilly Buck land.

North On the East Boundary of Sec. 12 T. 10 N. 5 W.

40,00 Set a 7/4 post from which,

Buck 7 in dia. bears N 18 W. 6 mts dist, & a
Lc. 4 " " S 53 E 8 " "

80,00 Set a post for the cor. of Sec. 11 T. 10 N. 5 W. from which,
Buck 9 in dia. bears N 18 E. 18 mts dist, & a
Sugar 6 " " N 5 W. 18 " "
Middleling good Buck land.

North On the East Boundary of Sec. 1 T. 10 N. 5 W.

T. N. 10th R. N. 4th 2nd Mer. Ind.

North On the East Boundary of Sec. 1. T. 10th R. 4th N.
 40.00 Set a 1/4 post from which
 W Oak 30 in dia: bears N 6 E. 43 links dist, 8 a
 Bush 15 " " " S 67 N. 36 " "
 80.00 Set a temp post for the cor of T. 10th R. 4th N.
 Lands 2nd rate, Timber Bush, Sugar, &c.
 April 9. 1811. Surveyed by
 James Holmes D.S.

Subdivisions

North Between Sec. 35 & 36. March 28. 1814
 40.00 Set a 1/4 post from which
 Bush 30 in dia: bears N 20 W. 28 links dist, 8 a
 Ls 9 " " " S 30 E. 28 " "
 80.00 Set a temp post for the cor of Sec. 25, 26, 35 & 36
 Lands muddy Timber Bush Oak & Sugar

East On a Random line between Sec. 25 & 36

West On the True line between Sec. 25 & 36
 26.50 A Creek 75 links wide, Course S.
 40.00 Set a 1/4 post from which
 Bush 20 in dia: bears N 18 W. 25 links dist, 8 a
 Ls 18 " " " S 20 W. 42 " "
 80.00 Set a post for the cor of Sec. 25, 26, 35 & 36 from which
 W Oak. 24 in dia: bears North 12 links dist, 8 a
 Sugar 8 " " " S 5 E. 20 " "
 Lands same.

North Between Sec. 25 & 26. T
 40.00 Set a 1/4 post from which
 Hickory 18 in dia: bears S 80 W. 8 links dist, 8 a
 Ls 18 " " " S 5 E. 16 " "

T. N. 10th R. N. 4th 2nd Mer. Ind.

80.00 Set a temp post for the cor of Sec. 23, 24, 25 & 26.
 Poor hilly stony land; &c.

East On a Random line between Sec. 24 & 25.

West On the True line between Sec. 24 & 25.
 40.00 1/4 Sec post in alternate 75 links wide, Course S.
 80.00 Set a post for the cor of Sec. 23, 24, 25 & 26 from which
 Bush 15 in dia: bears S 60 W. 19 links dist, 8 a
 Ls 36 " " " S 80 E. 22 " "
 Lands healthy Timber Oak & Bush

North Between Sec. 23 & 24
 34.75 A Poplar. 24 in dia:
 40.00 Set a 1/4 post from which
 Sugar 18 in dia: bears S 72 E. 8 links dist, 8 a
 Ls 18 " " " N 67 W. 19 " "
 80.00 Set a temp post for the cor of Sec. 13, 14, 23 & 24
 Healthy stony land; Timber Oak, & Sugar.

East On a Random line between Sec. 13 & 24

West On the True line between Sec. 13 & 24
 40.00 Set a 1/4 post from which
 Bush 12 in dia: bears N 4 W. 5 links dist, 8 a
 Ash 30 " " " S 23 E. 25 " "
 68.00 A Creek 75 links wide, Course S.
 79.00 Set a post for the cor of Sec. 13, 14, 23 & 24 from which
 a Bush 30 in dia: bears N 31 E. 39 links dist, 8 a
 Sassafras 12 " " " East 28 " "
 Healthy land Timber Oak & Hickory &c.

North Between Sec. 13 & 14

- 34.00 A Creek 75 links mid, corner SE
 40.00 Set a 74 sup post from whike,
 Sugar 12 in dia? bears South 31 links dist, 8 a
 Hick 14, , , N 75 W 37, ,
 80.00 Set a temp post for the cov of Sec 11, 12, 13 & 14
 Poor hilly land, Timber Oak & Buck.

East On a Random line between Sec 12 & 13.

- West On the True line between Sec 12 & 13.
 40.00 Set a 74 sup post from whike,
 Buck 15 in dia? bears N 52 W 18 links dist, 8 a
 Hick 15, , , S 37 W 25, ,
 79.00 Set a post for the cov of Sec 11, 12, 13 & 14 from whike,
 Ironwood 8 in dia? bears S 42 W 22 links dist, 8 a
 Buck 12, , , N 45 W 7, ,
 Land same.

- North Between Sec 11 & 12 March 29, 1844
 40.00 Set a 74 sup post from whike,
 Sugar 18 in dia? bears N 38 E 13 links dist, 8 a
 Buck 15, , , South 21, ,
 73.00 A Brook 15 links mid, corner W.
 80.00 Set a temp post for the cov of Sec 1, 2, 11 & 12
 Land hilly Timber Oak Buck & Hick.

East On a Random line between Sec 1 & 12

- West On the True line between Sec 1 & 12
 40.00 Set the 74 sup post from whike,
 Hick 12 in dia? bears N 7 E 17 links dist, 8 a
 Buck 15, , , S 58 W 10, ,
 75.00 A Brook 15 links mid, corner S.

- 80.00 Set a post for the cov. of Sec 1, 2, 11 & 12 from whike,
 Sugar 12 in dia? bears N 45 W 13 links dist, 8 a
 No. 15, , , S 40 E 22, ,
 Land hilly Timber Oak Buck Sugar &.

North Between Sec 1 & 12

- 40.00 Set a 74 sup post from whike,
 Sugar 24 in dia? bears S 5 E 15 links dist, 8 a
 Buck 12, , , S 75 W 18, ,
 51.00 A Brook 10 links mid, corner S W.
 83.00 Intersect the N. Bound at the post cov of Sec 33 & 36
 T. N. R. 4 N.
 Land & Timber same as last mile.

North Between Sec 35 & 34

- 18.50 A Oak 24 in dia?
 40.00 Set a 74 sup post from whike,
 Sugar 20 in dia? bears S 45 W 23 links dist, 8 a
 No. 12, , , N 3 E 6, ,
 80.00 Set a temp post for the cov of Sec 26, 27, 34 & 35.
 Land & Timber same.

East On a Random line between Sec 26 & 35.

West On the True line between Sec 26 & 35.

- 40.00 Set a 74 sup post from whike,
 Sugar 12 in dia? bears N 38 W 19 links dist, 8 a
 Walnut 18, , , S 70 E 25, ,
 80.00 Set a post for the cov of Sec 26, 27, 34 & 35 from whike,
 Buck 12 in dia? bears N 5 E 7 links dist, 8 a
 No. 10, , , S 54 E 17, ,
 Muddling Good land Timber Oak & Sugar.

T. No 10 N. R. No 4 W 2nd Mer. Ind.

North Between Secs 26 & 27

40.00 Set a 1/4 sec post from which,

Beck 15 in dia: bears N 58 W 18 links dist. 8 a

Do 9 " " " N 19 E 18 " "

71.50 A Brook 10 links wide, corner N.W.

80.00 Set a temp. post for the cor of Secs 22, 23, 26 & 27
Sands same.

East On a Random line between Secs 23 & 26.

West On the true line between Secs 23 & 26.

40.00 Set a 1/4 sec post from which,

Beck 36 in dia: bears N 47 W 30 links dist. 8 a

Sugar 9 " " " S 50 E 31 " "

80.00 Set a post for the cor of Secs 22, 23, 26 & 27 from which

Beck 6 in dia: bears North 5 links dist. 8 a

Oak 13 " " " N 10 E 44 " "

Hilly land Timber Oak, Beech & Sugar.

North Between Secs 22 & 23

March 30. 1814

40.00 Set a 1/4 sec post from which,

Elm 7 in dia: bears S 75 W 25 links dist. 8 a

Beck 8 " " " N 20 E 20 " "

78.00 A Brook 5 links wide, corner N.E.

80.00 Set a temp. post for the cor of Secs 14, 15, 22 & 23.

Poor hilly land; Timber Oak, & Beech &c.

East On a Random line between Secs 14 & 23.

West On the true line between Secs 14 & 23.

40.00 Set a 1/4 sec post from which,

Lynn 15 in dia: bears N 7 E 18 links dist. 8 a

Beck 9 " " " N 85 W 21 " "

T. No 10 N. R. No 4 W 2nd Mer. Ind.

78.00 A Brook 5 links wide, corner N.E.

80.00 Set a post for the cor of Secs 14, 15, 22, & 23 from which,

Sugar 10 in dia: bears East 8 links dist. 8 a

Do 15 " " " N 80 W 15 " "

Sands & timber same.

North Between Secs 14 & 23.

5.00 A Brook 4 links wide, corner N.E.

40.00 Set a post for the cor. of 1/4 sec from which,

Sugar 8 in dia: bears S 80 W 10 links dist. 8 a

Lynn 20 " " " N 67 E 23 " "

69.50 A Great Spring 12 links wide, corner E.

80.00 Set a temp. post for the cor of Secs 10, 11, 14 & 15.

Sands & Timber same as last mile.

East On a Random line between Secs 11 & 14.

West On the true line between Secs 11 & 14.

9.00 A Brook 50 links wide, corner S.

40.00 Set a 1/4 sec post from which,

Walnut 24 in dia: bears North 10 links dist. 8 a

Beck 18 " " " S 53 E 33 " "

80.00 Set a post for the cor of Secs 10, 14, 11 & 15 from which,

Beck 8 in dia: bears South 5 links dist. 8 a

Sassafras 9 " " " N 45 W 18 " "

Poor Broken land; Timber Beech, & W Oak.

North Between Secs 10 & 11. T. 10 N. R. 4 W.

40.00 Set a 1/4 sec post from which,

Beck 24 in dia: bears S 37 E 28 links dist. 8 a

Do 15 " " " N 27 E 18 " "

47.50 An Ash 24 in dia:

80.00 Set a temp. post for the cor of Secs 2, 3, 10 & 11.

T. N. 10 N. R. N. 4 W 2nd Mer. Ind.

Hilly land Timber Bech, Sugar. &c

East On a Random line between Sec 2 & 11

West On the True line between Sec 2 & 11

13.00 A Brook 75 links mid, corner S.

27.00 " " " " " N.E.

39.50 " " " " " S.E.

40.00 Set a 1/4 sec post from whike,

Sugar 15 in dia: bears N 63 W 29 links dist. S.

Ho. 12. " " " " " N 80 E 22 " "

80.00 Set a post for the cor. of Sec 2, 3, 10 & 11 from whike
a Poplar 30 in dia: bears North 39 links dist. S.

Sugar 7. " " " " " S 38 E 16 " "

Hilly land; Timber Bech, Sugar, Poplar. &c

North Between Sec 2 & 3

40.00 Set a post for the cor. of 1/4 sec from whike,
Bech 26 in dia: bears N 53 E 39 links dist. S &
Ho. 4 " " " " " N 20 W 16 " "85.00 Intersect the N Boundary 125 links East of the
old post cor of Sec 3 & 135. T. 11 N. R. 4 W
Hilly land; Timber Bech, Poplar & Sugar. &c

North Between Sec 33 & 34 March 31. 1814

1.25 A Brook 12 lks mid, corner N.W.

40.00 Set a 1/4 sec post from whike,

Sugar 5 in dia: bears N 15 E 35 links dist. S &
W Oak 33. " " " " " N 40 W 34 " "

80.00 Set a post temp for the cor. of Sec 27, 28, 33 & 34

East On a Random line between Sec 27 & 34

T. N. 10 N. R. N. 4 W 2nd Mer. Ind. 17

West On the True line between Sec 27 & 34

40.00 Set a 1/4 sec post from whike,

Sugar 6 in dia: bears N 26 E 18 links dist. S &
Bech 10. " " " " " S 30 W 21 " "

80.00 Set a post for the cor of Sec 27, 28, 33 & 34 from whike

Bech 10 in dia: bears N 30 E 10 lks dist. S &
Sugar 17. " " " " " S 50 W 10 " "

Land hilly Timber Bech, Sugar. &c

North Between Sec 27 & 28

10.50 A Brook 12 links mid, corner N.W.

40.00 Set a 1/4 sec post from whike,

Bech 14 in dia: bears N 75 W 13 links dist. S &
Ho. 4 " " " " " N 45 E 16 " "

46.00 A Sugar 15 in dia:

79.50 A Brook 60 lks mid, corner S.W.

80.00 Set a temp post for the cor of Sec 21, 22, 27 & 28.
Land hilly & strong Timber Bech & Sugar.

East On a Random line between Sec 22 & 27

West On the True line between Sec 22 & 27

3.00 A Brook 12 links mid, corner N.W.

40.00 Set a 1/4 sec post from whike,

Hick 10 in dia: bears N 10 E 10 links dist. S &
Bech 4 " " " " " S 58 E 13 " "

80.00 Set a post for the cor of Sec 21, 22, 27 & 28 from whike

a Sycamore 30 in dia: bears S 35 E 28 lks dist. S &
Maple 24 " " " " " N 40 W 56 " "

Land same. Sec. cor. in the Brook

North Between Sec 21 & 22

12.50 A Sugar 14 in dia:

- 39.50 A. Brook 10 W. wide course S.E.
 40.00 Set a 1/4 sec post from white
 Buck 8 in dia. bears S 40 E. 23 links dist. 80
 No. 4 " " S 58 E. 13 " "
 80.00 Set a temp. post for the cor. of Sec. 15. 16. 21 & 22
 Hilly rich land; Timber Buck, Sugar, Poplar
 Oak &c.

East On a Random line between Sec. 15 & 22

- West On the True line between Sec. 15 & 22
 25.00 A Brook 6 links wide, course S.W.
 40.00 Set a 1/4 sec post from white
 Sugar 15 in dia. bears N 70 W. 9 links dist. 80
 Buck 13 " " S 40 W. 50 " "
 66.50 A Brook 50 links wide, course S.E.
 80.00 Set a post for the cor. of Sec. 15. 16. 21 & 22 from white
 a Sugar 15 in dia. bears S 80 W. 8 links dist. 80
 Timmer 4 " " S 80 E. 6 " "
 Poor hilly stony land, Timber W Oak, Hickory

North Between Sec. 15 & 16

- 31.50 A Hickory 12 in dia.
 40.00 Set a 1/4 sec post from white
 Ash 20 in dia. bears S 85 W. 8 links dist. 80
 Buck 5 " " S 33 E. 10 " "
 78.50 A Brook 40 links wide, course S.E.
 80.00 Set a temp. post for the cor. of Sec. 9. 10. 15 & 16
 Poor broken land; Timber Buck W Oak & Hickory

East On a Random line between Sec. 10 & 15

- West On the True line between Sec. 10 & 15

- 40.00 Set a 1/4 sec post from white
 Sugar 15 in dia. bears N 12 E. 14 links dist. 80
 Poplar 30 " " S 30 E. 10 " "
 60.00 A Brook 50 links wide, course S.E.
 80.00 Set a post for the cor. of Sec. 9. 10. 15 & 16 from white
 Buck 8 in dia. bears S 40 W. 14 links dist. 80
 Poplar 13 " " N 10 E. 5 " "
 Land same.

North Between Sec. 9 & 10

- 4.50 A Brook 30 links wide, course S.W.
 6.00 " No. 30 " " E.
 40.00 Set a 1/4 sec post from white
 Buck 12 in dia. bears East 10 links dist. 80
 No. 16 " " N 43 W. 19 " "
 51.50 A Hickory 24 in dia.
 80.00 Set a temp. post for the cor. of Sec. 3. 4. 9 & 10
 Land 10 1/2 mile same. 2 1/2 mile hilly Timber
 Oak, Buck, Sugar, Poplar.

West On the True line between Sec. 3 & 10

- 40.00 Set a 1/4 sec post from white
 Sugar 15 in dia. bears S 30 E. 28 links dist. 80
 No. 18 " " West 13 " "
 48.00 a post 50 ft. wide course S.E.
 80.00 Set a post for the cor. of Sec. 3. 4. 9 & 10 from white
 Buck 8 in dia. bears S 60 E. 18 links dist. 80
 Linn. 12 " " N 3 E. 24 " "
 Land & Timber same.

East On a Random line between Sec. 3 & 10

- North Between Sec. 3 & 4 April 1st 1814
 40.00 Set a post for the cor. of 1/4 sec from white

- 39.50 A. Brook 10 W. wide corner S.E.
 40.00 Set a 74 sec post from whike,
 Beuch 8 in dia. bears S 40 E. 23 links dist. 8th
 No. 4 " " S 58 E. 13 " "
 80.00 Set a temp. post for the cor. of Sec. 15. 16. 21 & 22
 Healthy rich land; Timber Beuch, Sugar, Poplar
 Oak &c.

East On a Random line between Sec. 15 & 22

- West On the True line between Sec. 15 & 22
 25.00 A Brook 6 links wide, corner S. W.
 40.00 Set a 74 sec post from whike,
 Sugar 15 in dia. bears N 70 W. 9 links dist. 8th
 Beuch. 13 " " S 40 W. 50 " "
 66.50 A Brook 50 links wide, corner S. E.
 80.00 Set apart for the cor of Sec 15. 16. 21 & 22 from whike
 a Sugar 15 in dia. bears S 80 W. 8 links dist. 8th
 Firwood 4 " " S 80 E. 6 " "
 Poor hilly stony land, Timber W Oak, Hickory,

North Between Sec 15 & 16

- 31.50 A Hickory 12 in dia.
 40.00 Set a 74 sec post from whike,
 Ash 20 in dia. bears S 85 W. 8 links dist. 8th
 Beuch. 5 " " S 33 E. 10 " "
 78.50 A Brook 40 links wide, corner S. E.
 80.00 Set a temp. post for the cor of Sec. 9. 10. 15 & 16
 Poor broken land; Timber Beuch W Oak & Hickory

East On a Random line between Sec 10 & 15.

West On the True line between Sec 10 & 15.

- 40.00 Set a 74 sec post from whike,
 Sugar 15 in dia. bears N 12 E. 14 links dist. 8th
 Poplar 30 " " S 30 E. 10 " "
 60.00 A Brook 50 links wide, corner S. E.
 80.00 Set apart for the cor of Sec 9. 10. 15 & 16 from whike
 Beuch 8 in dia. bears S 40 W. 14 links dist. 8th
 Poplar 13 " " N 10 E. 5 " "
 Land same.

North Between Sec 9 & 10

- 4.50 A Brook 30 links wide, corner S. W.
 6.00 " No. 30 " " E.
 40.00 Set a 74 sec post from whike,
 Beuch 12 in dia. bears East 10 links dist. 8th
 No. 16 " " N 43 W. 19 " "
 51.50 A Hickory 24 in dia.
 80.00 Set a temp. post for the cor of Sec 3. 4. 9 & 10
 Land 10th mile same. 2nd mile hilly, Timber
 Oak, Beuch, Sugar, Poplar.

West On the True line between Sec 3 & 10

- 40.00 Set a 74 sec post from whike,
 Sugar 15 in dia. bears S 30 E. 28 links dist. 8th
 No. 18 " " West 13 " "
 48.00 a Brook 50 links wide, corner S. E.
 80.00 Set apart for the cor of Sec 3. 4. 9 & 10 from whike,
 Beuch 8 in dia. bears S 60 E. 18 links dist. 8th
 Cypress 12 " " N 5 E. 24 " "
 Land & Timber same.

East On a Random line between Sec 3 & 10

- North Between Sec 3 & 4. April 1st 1814
 40.00 Set apart for the cor of 74 sec from whike,

20

T. No 10 & R. No 4 W 2nd Mer. Ind.

W Oak 24 in dia: bears N 25 W 17 links dist. 8 a
 Sugar 8 " " " S 20 W 24 " "
 85.00 Intersect the A. Boundary 125 links East of the post
 cor of Sec. 33 & 34 T. 11. N. R. 4 W and set a post
 for the cor of Sec. 3 & 4 from which
 1/2 Buck 24 in dia: bears S 25 E 36 links dist. 8 a
 Co. 12 " " " N 45 E 16 " "
 Land same.

North Between Sec. 32 & 33
 11.50 A Creek 75 links mid, corner S. W.
 40.00 Set a 1/4 sec post from which
 1/2 Buck 3 in dia: bears N 45 W 4 links dist. 8 a
 Oak 4 " " " N 27 E 5 " "
 80.00 Set a temp. post for the cor of Sec. 28, 29, 32 & 33
 Healthy rich land; Timber Buck.

East On a Random line between Sec. 28 & 33

West On the True line between Sec. 28 & 33
 40.00 Set a 1/4 sec post from which
 Sugar 12 in dia: bears N 40 E 15 links dist. 8 a
 Co. 13 " " " S 12 E 27 " "
 51.00 A Creek 75 links mid, corner S.
 80.00 Set a post for the cor of Sec. 28, 29, 32 & 33 from which
 Elm 17 in dia: bears S 20 E 15 links dist. 8 a
 Buck 6 " " " N 66 E 8 " "
 Rich Hilly Buck land.

North Between Sec. 28 & 29
 24.00 A Buck 20 in dia: 1
 40.00 Set a 1/4 sec post from which
 1/2 Buck 5 in dia: bears N 45 W 16 links dist. 8 a

Camp

21

T. No 10 & R. No 4 W 2nd Mer. Ind.

ch. 1/2 U.

Elm 8 in dia: bears S 5 E 12 links dist.
 80.00 Set a temp. post for the cor of Sec. 20, 21, 28 & 29
 Healthy rich land; Timber Buck, Sugar.

East On a Random line between Sec. 21 & 28.

West On the True line between Sec. 21 & 28.
 40.00 Set a 1/4 sec post from which

1/2 Buck 20 in dia: bears South 20 links dist. 8 a
 Co. 4 " " " N 56 E 19 " "
 62.00 A Creek 50 links mid, corner S. E.
 80.00 Set a post for the cor of Sec. 20, 21, 28 & 29 from which
 1/2 Buck 6 in dia: bears S 8 W 11 links dist. 8 a
 Sugar 15 " " " North 19 " "
 Land hilly & stony Timber Buck, Sugar, &c.

North Between Sec. 20 & 21.

14.00 A Creek 60 links mid, corner S. E.
 40.00 Set a 1/4 sec post from which
 1/2 Buck 26 in dia: bears S 10 E 29 links dist. 8 a
 Ironwood 8 " " " N 80 W 5 " "
 50.00 A W Oak 36 in dia:
 80.00 Set a temp. post for the cor of Sec. 16, 17, 20 & 21.
 Healthy land; Timber Buck & Oak.

East On a Random line between Sec. 16 & 21

West On the True line between Sec. 16 & 21
 39.50 A Brook 8 links mid, corner S. W.
 40.00 Set a 1/4 sec post from which
 1/2 Buck 15 in dia: bears N 80 E 14 links dist. 8 a
 Healthy 16 " " " N 85 W 9 " "
 80.00 Set a post for the cor of Sec. 16, 17, 20 & 21 from which

T. N. 16 N. R. N. 4 W. 2nd Mer. Ind.

West On the line between Sec. 29 & 30

40.00 Set a 14 sup post from whike,

Beck 20 in dia: bears N 31 E. 9 links dist. 8 a

No. 12 " " " N 10 W. 30 " "

80.00 Set apart for the cor of Sec. 29, 30, 31 & 32 from whike,

Aycarrow 24 in dia: bears N 15 W. 5 lks dist. 8 a

Elev. 10 " " " S 72 E. 25 " "

Land same.

West Between Sec. 30 & 31

7.00 A Creek 31 links mid, corner S. E.

40.00 Set a 14 sec post from whike,

Beck 12 in dia: bears N 5 E. 9 links dist. 8 a

No. 18 " " " N 10 W. 5 " "

71.00 Intersect the West Boundary and fall 100 links

South of the post cor of Sec. 25 & 36. T. 16 N. R. 5 W. &

Set apart for the cor of Sec. 30 & 31 from whike,

Sugar 12 in dia: bears N 10 E. 12 links dist. 8 a

Beck 9 " " " N 10 W. 9 " "

Hilly land: Timber Oak, Beck & Sugar.

North Between Sec. 29 & 30

40.00 Set a 14 sup post from whike,

Beck 15 in dia: bears N 47 W. 9 lks dist. 8 a

Maple 12 " " " N 29 E. 32 " "

71.00 A Poplar 24 in dia:

80.00 Set a temp post for the cor of Sec. 19, 20, 29 & 30

Land & Timber same.

East On a Ran dom line between Sec. 20 & 29

West On the line between Sec. 20 & 29

40.00 Set a 14 sec post from whike,

T. N. 16 N. R. N. 4 W. 2nd Mer. Ind.

Beck 15 in dia: bears South 3 links dist. 8 a

Oak 20 " " " North 20 " "

80.00 Set apart for the cor of Sec. 19, 20, 29 & 30 from whike,

Beck 6 in dia: bears S 87 W. 11 lks dist. 8 a

Sugar 15 " " " North 19 " "

Land hilly, Timber Beck Oak, & Hickory.

West Between Sec. 19 & 30

40.00 Set a 14 sec post from whike,

Beck 24 in dia: bears N 45 W. 35 lks dist. 8 a

Immort 5 " " " S 5 E. 7 " "

71.00 Intersect the West Boundary 100 links South of the

post cor of Sec. 24 & 25. T. 16 N. R. 5 W. and set a

" " " " 19 & 30 from whike,

Elev. 12 in dia: bears N 65 W. 26 lks dist. 8 a

Beck 24 " " " N 10 E. 21 " "

Land same as last mile.

North Between Sec. 19 & 20 Apr. 3. 1814

40.00 Set a 14 sec post from whike,

Poplar 20 in dia: bears S 75 E. 38 links dist. 8 a

Logwood 4 " " " N 10 W. 5 " "

80.00 Set a temp post for the cor of Sec. 17, 18, 19 & 20.

Land of middling quality, Timber Beck, Sugar & Oak.

East On a Ran dom line between Sec. 17 & 20

West On the line between Sec. 17 & 20

38.00 A Brook 10 links mid, corner S.

40.00 Set a 14 sup post from whike,

Sugar 10 in dia: bears S 80 E. 18 lks dist. 8 a

No. 7 " " " N 47 W. 11 " "

57.00 A Creek 60 links wide, Course S.E.
 80.00 Set a post for the cor of sec. 17 18 19 20 from which
 Reck 24 in dia. bears N 20 W. 6 lks dist. 80
 Co. 12 " " " N 70 W. 22 " "
 Sand & timber as above.

West Between Sec 18 & 19
 40.00 Set a 74 sup post from which
 Reck 26 in dia. bears North 30 lks dist. 80
 Elm. 18 " " " N 50 W. 30 " "
 72.00 Intersect the West Boundary 150 links South of the
 post cor of sec. 13 & 24 T. 10 N.R. 5 W and set a
 " " " " 18 & 19 from which
 Reck 12 in dia. bears S 85 E. 23 lks dist. 80
 Co. 20 " " " S 50 E. 16 " "
 Sand & timber same.

North Between Sec 17 & 18.
 20.00 A Creek 60 lks wide, Course S. E.
 40.00 Set a 74 sup post from which
 Reck 20 in dia. bears S 30 W. 12 lks dist. 80
 Co. 20 " " " N 15 E. 20 " "
 63.00 An Oak 36 in dia.
 80.00 Set a temp. post for the cor. of sec. 7, 8, 17 & 18.
 Sand hilly and rich; Timber Reck. Oak & Sugar.

East On a Random line between Sec 8 & 17.

West On the True line between Sec 8 & 17
 40.00 Set a 74 sup post from which
 Sugar 6 in dia. bears N 45 W. 18 lks dist. 80
 Elm. 18 " " " N 47 E. 12 " "
 80.00 Set a post for the cor of sec. 7, 8, 17 & 18 from which

Reck 18 in dia. bears North 44 lks dist. 80
 Co. 24 " " " S 20 W. 19 " "
 Sand the same.

West Between Sec 7 & 18.

36.00 A Brook 12 links wide, Course S.
 40.00 Set a 74 sup post from which
 Elm. 24 in dia. bears N 50 W. 29 lks dist. 80
 Hick 20 " " " S 5 E. 13 " "
 73.00 Intersect the West Boundary 150 links South of the post
 cor of sec. 12 & 13 T. 10 N.R. 5 W. Set a post for the
 " " " " 7 & 18 from which
 Sugar 22 in dia. bears N 84 W. 33 lks dist. 80
 Reck 12 " " " N 73 E. 20 " "
 Sand muddling quality; Timber Reck. Sugar & Oak

North Between Sec 7 & 18.

40.00 Set a 74 sup post from which
 Reck 24 in dia. bears S 10 E. 5 lks dist. 80
 Ironwood 5 " " " North 32 " "
 41.00 A Brook 10 lks wide, Course S.W.
 80.00 Set a temp. post for the cor of sec. 5, 6, 7 & 18.
 Sand 2nd. 2nd; Timber Reck. Oak & Sugar.

East On a Random line between Sec 5 & 18.
 April 4. 1814

West On the True line between Sec 5 & 18.

200 A Creek 25 links wide, Course S.E.
 40.00 Set a 74 sup post from which
 Reck 30 in dia. bears S 70 E. 11 lks dist. 80
 Poplar 12 " " " N 41 E. 35 " "
 80.00 Set a post for the cor of sec. 5, 6, 7 & 18 from which

T. N. 10 N. R. No 4 W 2nd Mer. Ind.

Sugar 9 in dia: bears S 54 E. 11 lbs dist. 80

Buck 12 " " " S 49 W. 18 " "

Send 2nd rate; Timber Buck, Sugar. Poplar 80

West Between Sec 62 & 63

27.00 A Brook 10 lbs mid. coarse.

40.00 Set a 14 sup post for the cor of Sec 62 from which
Sugar 15 in dia: bears S 30 E. 31 lbs dist. 80
Buck 12 " " " S 58 W. 19 " "

73.00 Intersect the West Boundary 100 links South of the
post cor of Sec 102 T. 10 N. R. 5 W and set a post
for " " " 60 ft from which
Buck 30 in dia: bears North 32 W dist. 80
Hick 10 " " " S 82 W. 25 " "
Send same as last mt.

North Between Sec 54 & 55

31.00 A W Oak 36 in dia:

40.00 Set a 14 sup post from which

Poplar 20 in dia: bears S 10 W. 22 lbs dist. 80

Do. 24 " " " S 30 E. 20 " "

85.00 Intersect the North Boundary 200 links East of the
post cor of Sec 31 & 32 T. 11 N. R. 4 W and set a

" " " 5 ft. from which

John Hutchinson & Elchamkars
Jalot. Barnett.

James Holmes D.S.

Meanders of the Right Bank of White
River commencing in the South 13 of Sec. 36
thence up stream in Sec. 36.

N 19 W 7.36

N 5 W 1.78

T. N. 10 N. R. No 4 W 2nd Mer. Ind.

N 6 W 5.02

N 17 W 2.30

N 2 1/2 W 1.50 To an Island

N 31 E 9.49

N 2 E 1.42

N 5 W 1.57

N 1 E 1.64

N 5 W 2.73

N 4 E 1.36

To upper end of Island.

N 9 E 2.87

N 18 E 2.49

N 32 E 3.84

N 43 E 1.60

N 38 E 2.43

N 46 E 4.83

N 41 E 3.37

N 72 E 3.29

N 81 E 2.56

N 65 E 0.46 To the East W of Sec 36 & set a post for
the cor of frac. Sec. 36 from which

Clothwood 12 in dia: bears N 5 E. 9 lbs dist. 80
Sycamore 12 " " " N 64 W. 18 " "

South 5.20 Across the River & set a post for the cor of sec
36 from which

Maple 5 in dia: bears N 3 1/2 E. 18 lbs dist. 80

Elm. 8 " " " S 25 E. 17 " "

Meanders of the Left Bank of W River from the
last named post. thence down stream in Sec. 36.

S 30 W 4.74

S 42 W 7.05

S 22 W 4.94

S 12 W 6.34

T. N. 10 N. R. N. 4 W. 2nd Mer. Ind.

1277 3.50

150. 3.30

1977 5.19

South 3.17

2177 2.82

1677 6.82

12077 3.17

13277 2.52

13777 2.17

1277 0.71

11077 10.00 To Township line.

South 606 distance on the South E. side of R. to 1/4
Su. cor.

Friday May 19. 1820

Surveyed by

Alex. Holmes L.S.

I certify that the foregoing Transcript of the field
notes of Township N. 10 N. R. N. 4 W. 2nd Mer. Ind. has been compared with the
Original notes in this Office & found to be
correct.

Surveyor General's Office.

Cincinnati Dec. 10. 184

Sur. Gen.

Township N. 11 North of Range N. 4 West 2nd Mer. Ind.

Ch. P. Sec.

South Boundary.

May 2nd 1811 From the cor of T. 10 N. R. N. 4 W. 2nd Mer.
East On a Random line On the South B. of Sec. 31.
T. 11. N. R. 4 W.

30.00 Set a temporary 7/4 Su post.

55.00 At Brook 10 1/2 m. N.E. corner S.E.

70.00 Set a temporary post for the cor of Sec. 31 & 32

The land on this line Generally hilly & rich, Timber
Sugar Buck Ash, Oak, &c.

East On a Random line On the South B. of Sec. 32.
T. 11. N. R. 4 W.

27.00 At Brook 5 m. N.E. corner S.E.

40.00 Set a temporary 7/4 Su post

43.00 At Brook 6 m. N.E. corner S.W.

80.00 Set a temporary post for the cor of Sec. 32 & 33.
Land & Timber same.

East On a Random line between Sec. 4 & 33.

" " " " On the South B. of Sec. 33.
T. 11. N. R. 4 W.

23.00 At Brook 3 m. N.E. corner N.E.

40.00 Set a temporary 7/4 Su post.

43.00 At Brook 3 m. N.E. corner N.

80.00 Set a temporary post for the cor of Sec. 33 & 34.
Land & Timber same.

East On a Random line between Sec. 3 & 34.

" " " " On the South B. of Sec. 34.
T. 11. N. R. 4 W.

7.50 At Brook 30 m. N.E. corner S.

10.00 " 10 30 " " "

40.00 Set a temporary 7/4 Su post.